

# 5.6.2

## NetBox Software Version 5.6.2 for the NetBox Family of Products, NetBox VRx and NetBox VR Series Products

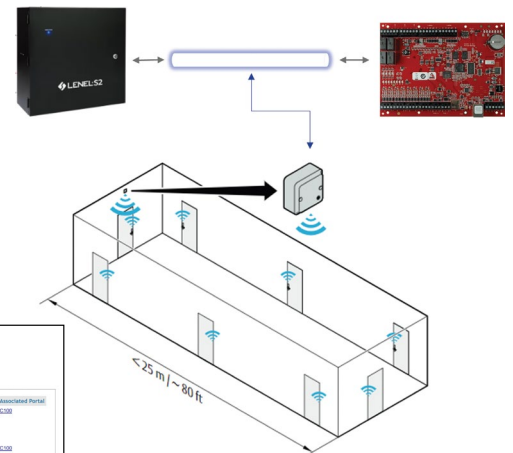
NetBox™ access control software version 5.6.2 introduces new virtual machine options to enable a closer match between your server resources and a NetBox virtual solution. It also includes a new integration with Aperio IP Hubs, sub-location support for Allegion locksets, enhanced options for running Custom Reports, enhancements to the user interface, and additional VMS integrations with Avigilon and Hanwha.

### Additional VM Options

NetBox is now available for deployment in Microsoft Hyper-V Manager as a virtualization server option. Additionally, NetBox now has better-tailored virtual solutions to fit your needs by offering three virtual sizing options: 64GB, 128GB, and 1TB.

### Aperio AH40 IP Hubs powered by Mercury

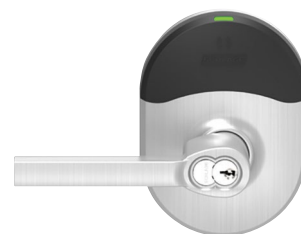
Start or expand your NetBox install with ease by leveraging a new integration with Aperio AH40 GEN5 IP hubs powered by Mercury. Connect up to 64 locksets per AH40 hub over wi-fi.



| Name | Ref | ObjType | Model | Status | Resource Details | Associated Portal |
|------|-----|---------|-------|--------|------------------|-------------------|
| AH40 | 1   | 2.0     | AH40  | IP     | ASBIA_AH40       |                   |
| AH40 | 2   | 2.0     | AH40  | IP     | ASBIA_AH40       |                   |
| AH40 | 3   | 2.1     | AH40  | IP     | ASBIA_AH40       |                   |

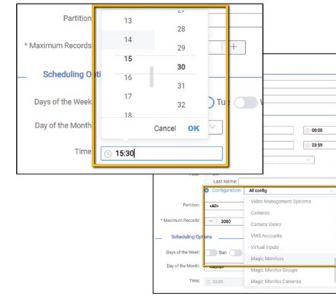
### Improved Location Support for Allegion NDE Locksets

One of the key features within NetBox is the Threat Level and Location functionality, where a user can modify the behavior of portals, locks, credential readers, etc. based on an assigned threat level. With this improved functionality, the Allegion NDE locksets can be assigned to locations or sub-locations allowing for greater flexibility when managing a lockdown situation.



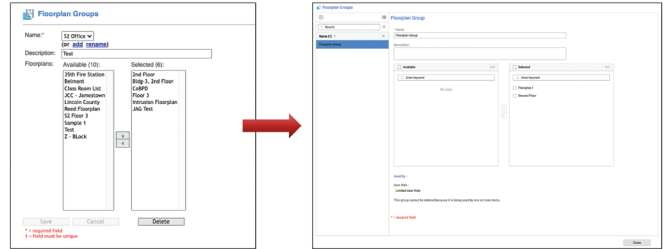
# Reporting Enhancements

Assign unique run-times to your reports in NetBox. Track VMS and Magic Monitor configuration changes using our Audit Trail report.



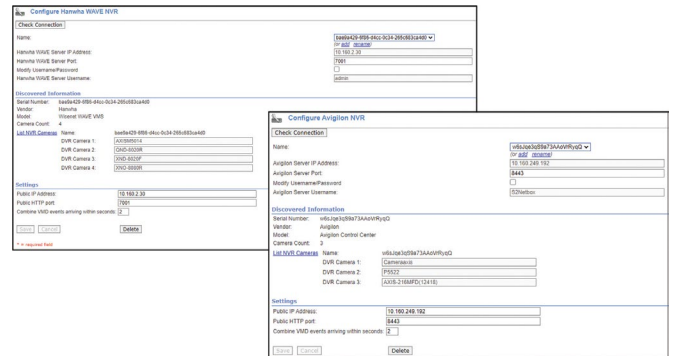
# UI Tech Updates

NetBox continues to update its user interface for both improved usability and enhanced cybersecurity.



# VMS Updates – Hanwha and Avigilon Integrations

A new integration with Hanwha WAVE is now part of the growing list of NetBox integration partners. View live and alarm-based recorded video through NetBox. Additionally, we have updated our existing integration to support version 7.14.14 of Avigilon Control Center™.



The following LenelS2 hardware is eligible for upgrade to version 5.6.2 and later:

- NetBox Enterprise 50 / 100 Access Control & Event Monitoring System
- NetBox Access Control & Event Monitoring System
- NetBox Extreme Access Control & Event Monitoring System
- NetBox VRx Access Control & Video Management System
- NetBox VR Access Control & Video Management System
- NetBox VRx Quatro Access Control & Video Management Solution
- NetBox VR Quatro Access Control & Video Management System

If you have traditional LenelS2 hardware that is not listed here or are not sure how to identify your hardware, please log in to Support Central and view the **Forward! Traditional Hardware Identifier** on any NetBox Series Support Page.



For more information, please visit [lenel2.com](https://lenel2.com).

Specifications subject to change without notice.

©2023 Carrier. All Rights Reserved.  
All trademarks and service marks are the property of their respective owners.